

# THE ULTIMATE ANIMAL ALPHABET

AARDWOLF



BLUE MORPHO BUTTERFLY



CHINCHILLA



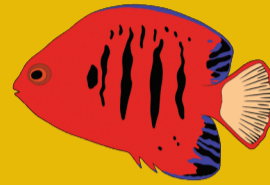
DAINTY GREEN TREE FROG



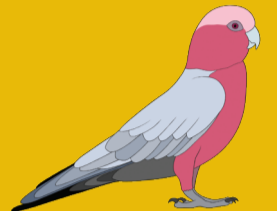
EMERALD TREE BOAS



FLAME ANGELFISH



GALAH



HUMPBACK WHALE



INDIAN STAR TORTOISE



JAGUAR



KOALA



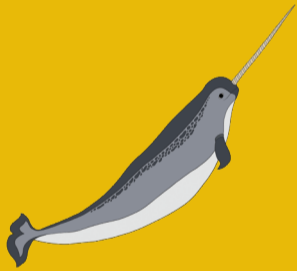
LEOPARD SEAL



MALLARD DUCK



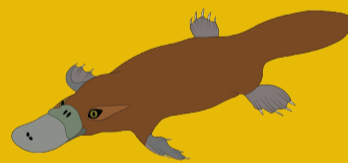
NARWHAL



ORANGUTAN



PLATYPUS



QUOKKA



RAINBOW LORIKEET



SUGAR GLIDER



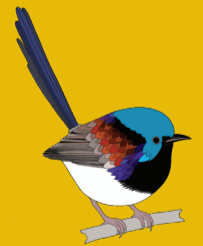
TASMANIAN DEVIL



URAL OWL



VARIEGATED FAIRY-WREN



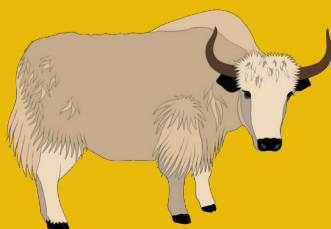
WILDEBEEST



XINGU RIVER RAY



YAK



ZEBRA

